



# OAKFIELD



Centauri Court, Midway Quay

£2,600 Per Calendar Month



3



3



1



D



## Centauri Court, Midway Quay

Simply stunning! This three bedroom, three terraced penthouse apartment with beautiful views over the outer harbour towards the sea is not one to be missed.

As you enter the property, you are welcomed into a large reception hall, which leads you to a generous sized open plan living area with doors leading out on to your own private terrace, you will also find a modern fitted kitchen with a range of built in appliances and freestanding fridge/freezer, also with access out onto the terrace.

The main bedroom has its very own balcony looking out to harbour and the sea, it also has its own en-suite shower/bathroom, and features floor to ceiling windows letting in plenty of natural light. Two further bedrooms, one with its own en-suite shower room. and a also a family bathroom.

The apartment comes with its own private parking space.

An annual household income of £84,000 will be required for the affordability criteria of this property.

The minimum tenancy length is 12 months.







### Living Area

32'9" x 16'4" (10 x 5)

### Kitchen

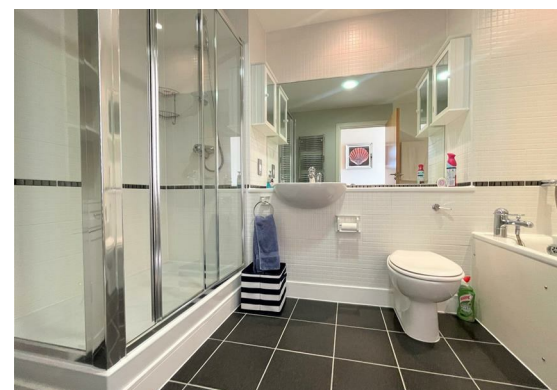
10'2" x 8'10" (3.10 x 2.70)

### Bathroom

6'10" x 6'6" (2.10 x 2.00)

### Bedroom One

21'3" x 19'4" (6.50 x 5.90)



### Ensuite

7'2" x 10'2" (2.2 x 3.1)

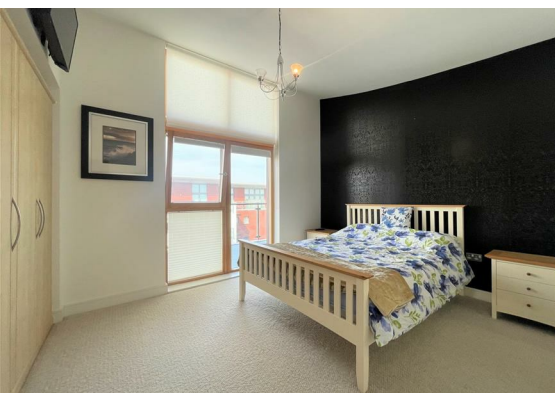
### Bedroom Two

10'5" x 14'1" (3.2 x 4.3)

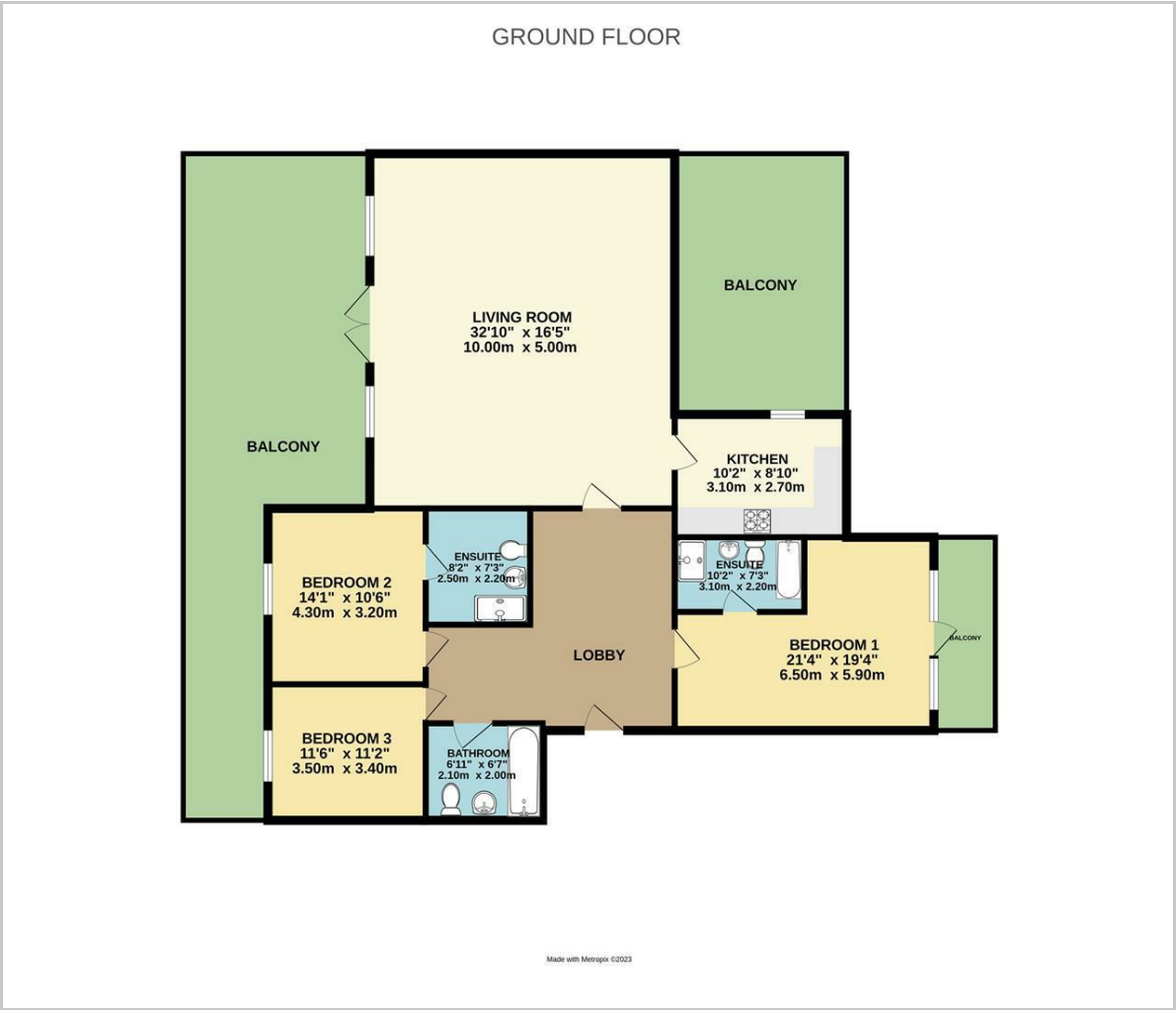
### Ensuite

8'2" x 7'2" (2.5 x 2.2)

**Council Tax Band G - £3,846.27**



Floor Plan

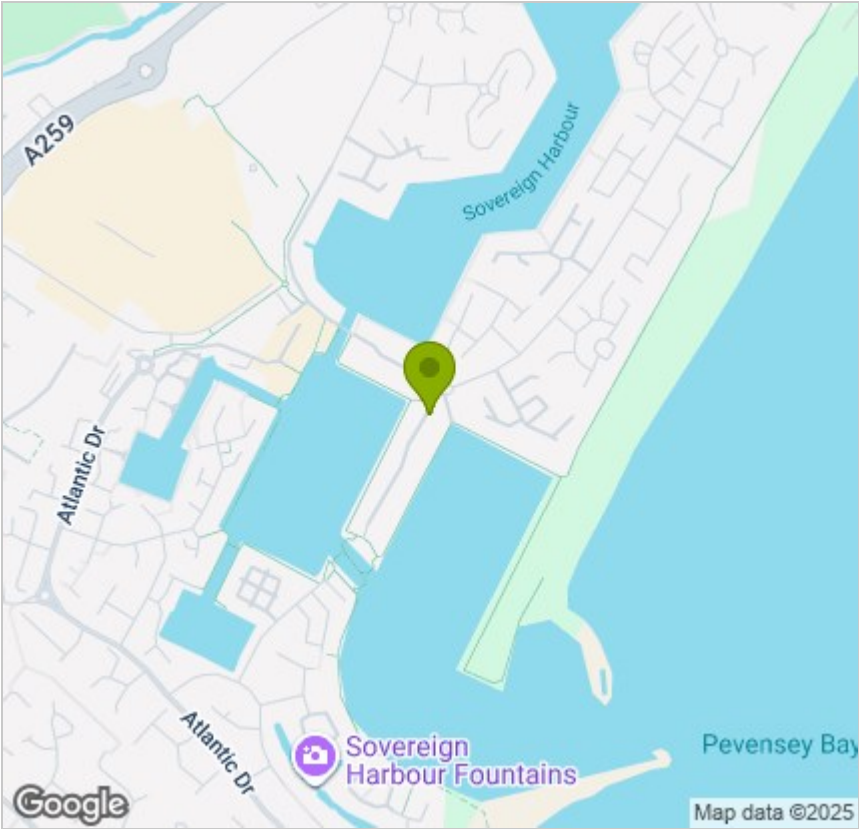


Viewing

Please contact us on 01323 405553 if you wish to arrange a viewing appointment for this property or require further information.

These particulars, whilst believed to be accurate are set out as a general outline only for guidance and do not constitute any part of an offer or contract. Intending purchasers should not rely on them as statements of representation of fact, but must satisfy themselves by inspection or otherwise as to their accuracy. No person in this firms employment has the authority to make or give any representation or warranty in respect of the property.

Area Map



Energy Efficiency Graph

